

DINO 2 INTEGRATED LED BATTEN

PART OF THE MEGAMAN FIXTURES RANGE

MEGAMAN®

3yr
WARRANTY

DINO 2

This new and improved superior, modern linear LED batten is ideally suited to car parks, warehouses and outdoor areas.

FEATURES

- Integrated LED batten
- Available in a range of sizes and wattages
- Permanent live option
- Optional cable gland covers available
- PIR Sensor Module available
- 160° beam angle
- L90 at 25000 hours, 50000 hours rated life

APPLICATIONS

- Car Parks
- Warehouses
- Workshops
- Underground areas
- Outdoor areas

BENEFITS

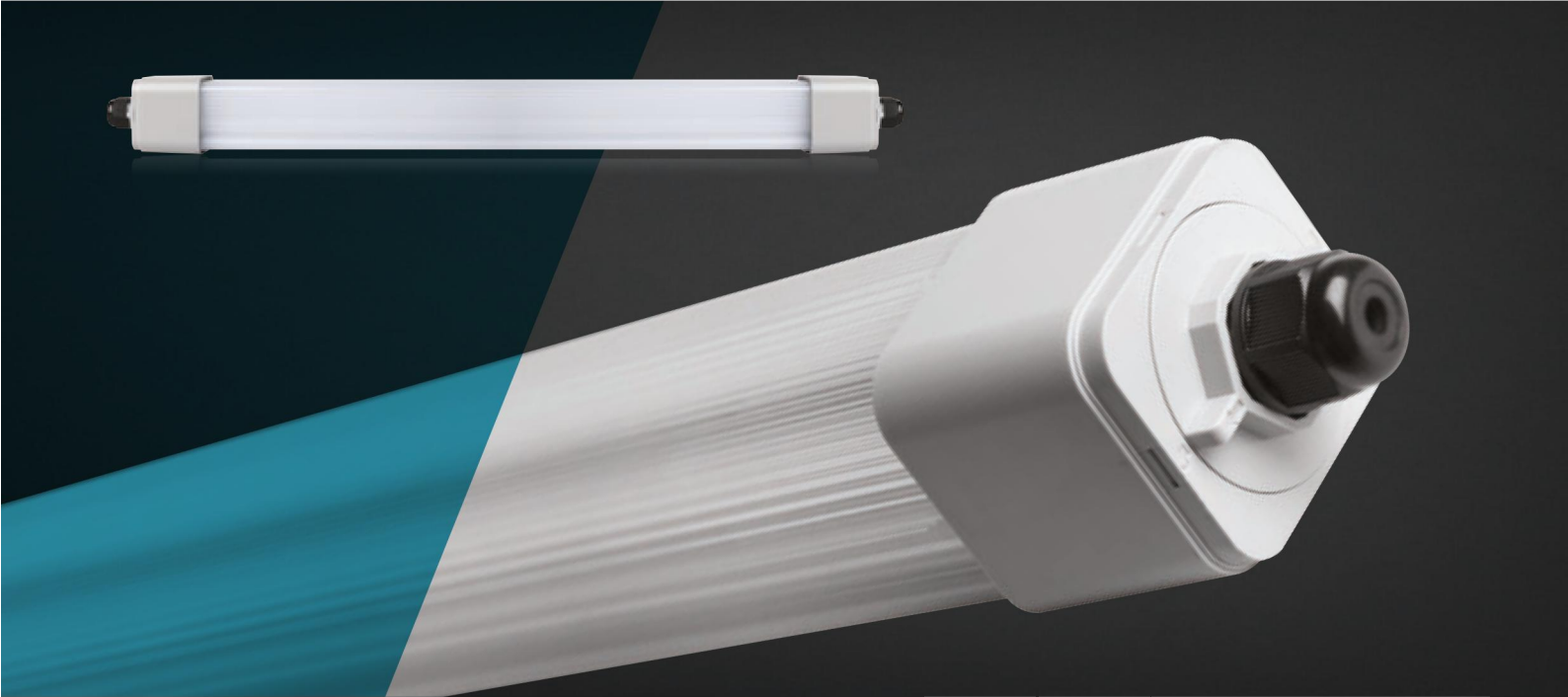
- Ideal alternative to T5 and T8 linear fluorescent luminaires
- Perfect for a number of different applications and spaces
- Simple installation and easy maintenance
- Permanent live to facilitate the use of a non-maintained emergency luminaire and sensor modules
- Option to conceal cable entry
- Control lighting when not in use
- Wide and even light distribution
- Reduced maintenance costs

NEW ACCESSORY AVAILABLE

PIR SENSOR MODULE

- Self-contained remote PIR
- Up to 13m range when fitted at 5m height
- Controls all Dino 2 variants
- Reduced number of PIR required





SPECIFICATION



UP TO
6500*
LUMENS



50,000*
HOURS



IP66
RATED



IK08
RATED



CLASS II
RATED

DINO 2 INTEGRATED LED BATTEN

UK Order Code >	190781	190782	190783	190784	190785
Watts	19.5W	22.5W	35W	41.5W	63W
Colour Temp (K) /CRI	4000K / 80	4000K / 80	4000K / 80	4000K / 80	4000K / 80
Lumens (lm)	1800	2350	3600	4300	6500
Candelas (cd)	460	620	900	1200	1600
Dimmable	N	N	N	N	N
Hrs Lamp Life (L70)	50,000	50,000	50,000	50,000	50,000
Hrs Lamp Life (L90)	25,000	25,000	25,000	25,000	25,000
Beam Angle	160°	160°	160°	160°	160°
Weight (g)	679	1194	1571	1307	1627
Dimensions (LxWxD mm)	672x62x56	1272x62x56	1572x62x56	1272x62x56	1572x62x56

ACCESSORIES AVAILABLE

- 190800** - PIR Sensor Module (pictured below)
- 190742** - Brackets for theft protection
- 190745** - End Caps

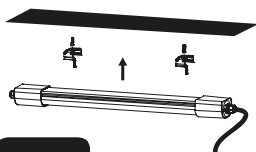


Operating temperature -30°C to +40°C

FOB60900v0-pl
FOB61000v0-pl
FOB61100v0-pl
FOB61000v1-pl
FOB61100v1-pl

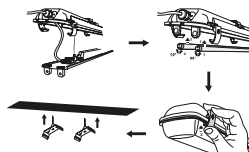
EASE OF INSTALLATION

MEGAMAN® DINO 2



VS

Conventional Waterproof Batten



3yr
WARRANTY

* Maximum output from highest spec lamp/module in range.
* Lamps are tested to both L70 and L90 standards. Figure represents L70.

For technical specification and photometric data please refer to the website.

